



Using the Cheshire East Council 'Public Map Viewer' to view town and parish council electoral boundaries

In December 2022, the Borough Council published the new town/ parish council, parish and parish ward boundaries that will come into effect on 1st April 2023 as part of the [Cheshire East \(Reorganisation of Community Governance\) Order](#). At the same time, Council published boundaries for the new polling districts and polling station locations that will come into effect on 1st April.

The new map layers can be accessed via the Council's [Public Map Viewer](#), which is accessible to all town/ parish councils, residents and other interested parties.

NOTE: The new boundaries can also be shared, on request to Cheshire East Council, in electronic boundary file format (e.g. "shapefile" or "geopackage" format). This may be useful for those town/ parish councils that have access to and expertise in using mapping software packages.

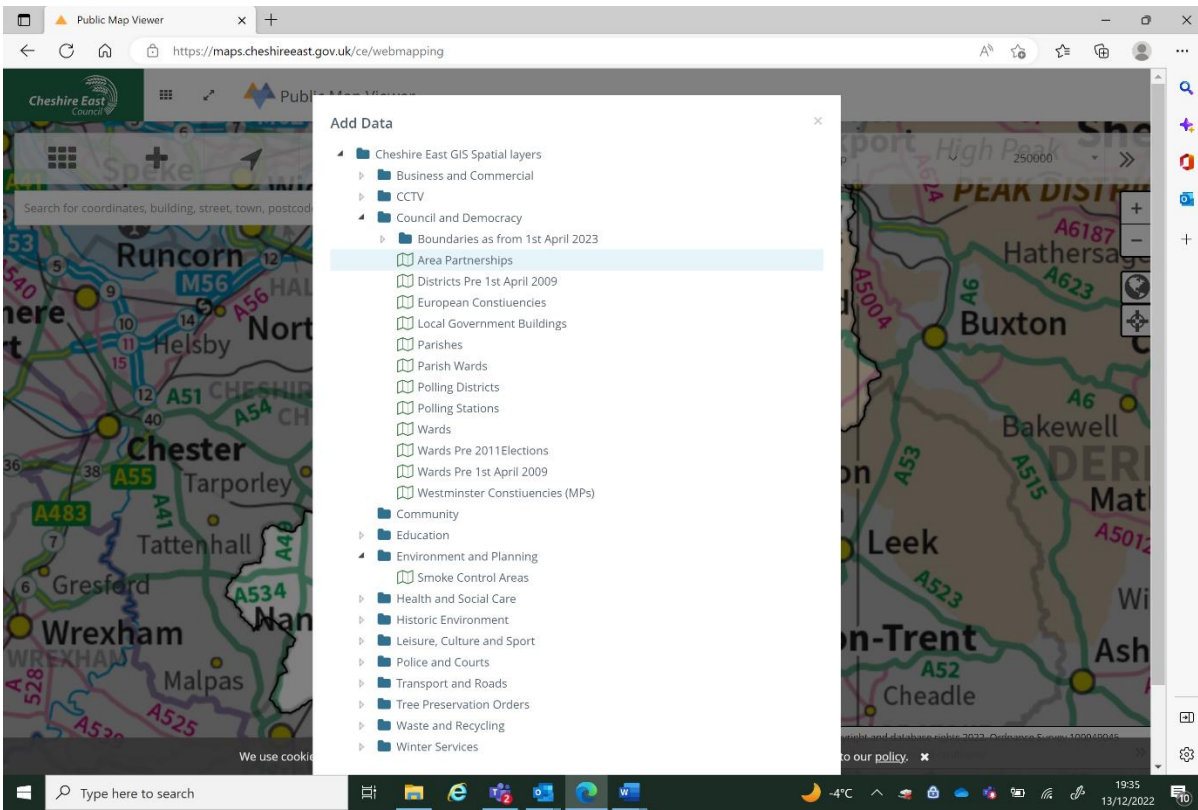
Navigating the viewer:

- Click the small plus/ minus icons in the top right of the display to zoom in/ out and change the map scale.
- Click and drag to navigate around the map area.

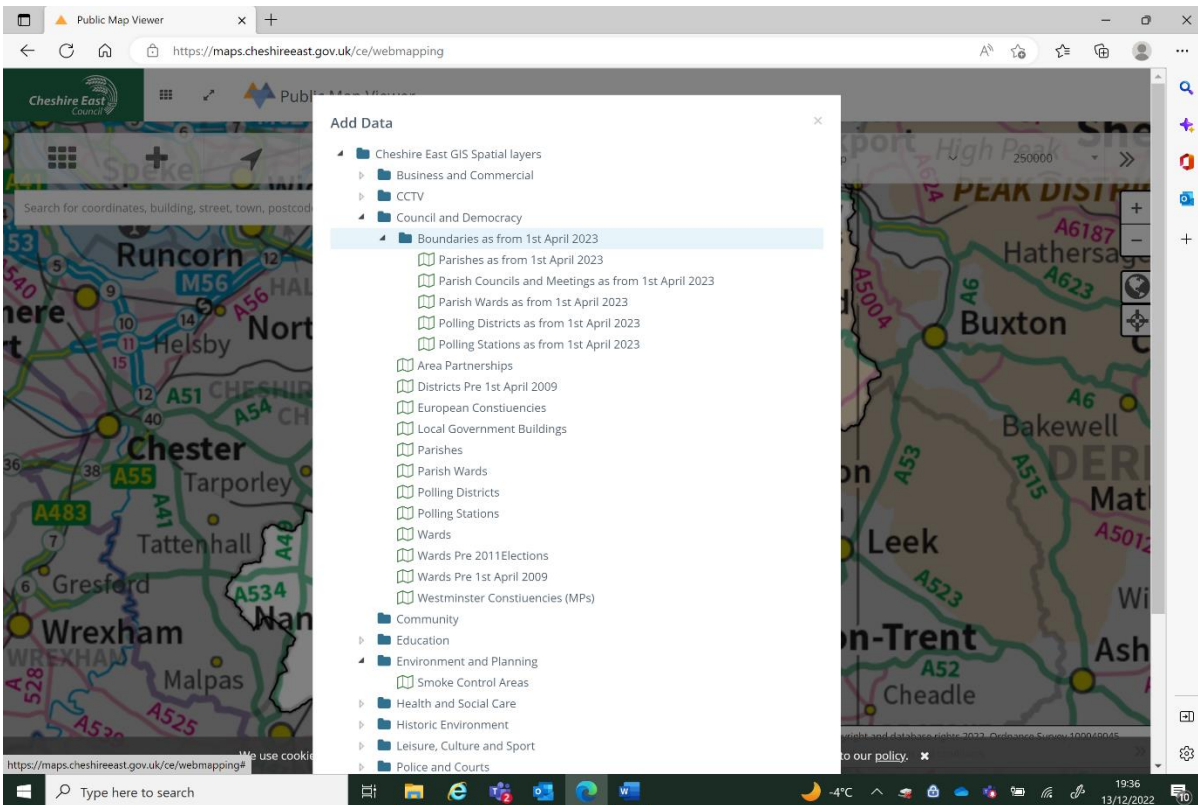
Adding and removing map layers:

To add layers:

- Click the large plus sign in the top left to add map layers. An "Add Data" pop-up window will appear.
- You may find the only folder of map layers on display to start with is the top tier one called "Cheshire East GIS Spatial layers".
- If so, click the small arrow to the left of this to open the 2nd tier of folders.
- Click the arrow next to the "Council and Democracy" folder to open up the different electoral geography map layers (if these are not already opened up).
- This "Council and Democracy" folder includes the current administrative boundaries, some former ones and a 3rd tier folder called "Boundaries as from 1st April 2023" as shown in screenshot 1 below.



➤ Click the arrow next to the “Boundaries as from 1st April 2023” folder, so that you can view all the new boundaries and polling station layers as shown in screenshot 2 below:

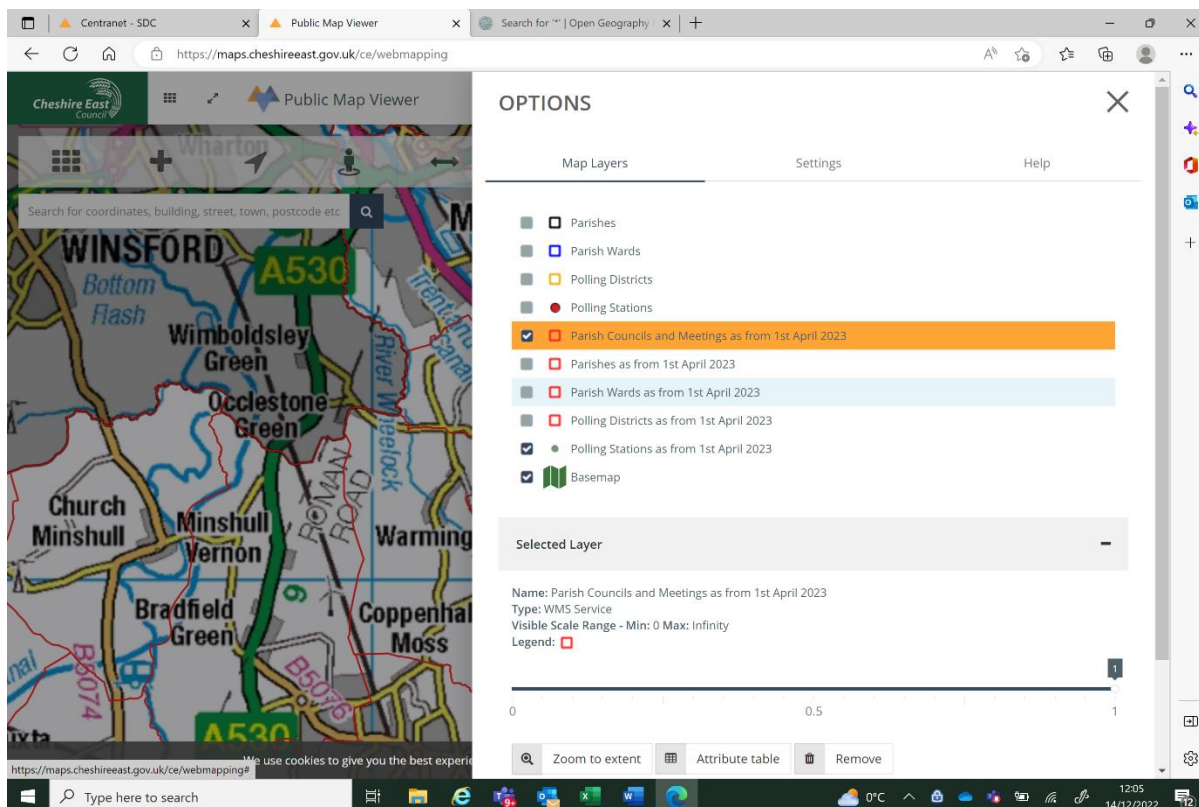


- Click on the name of the layer you wish to display on the map: e.g. “Parish Councils and Meetings as from 1st April 2023”. This layer’s name will now be highlighted (in orange), to show it has been selected.
- Scroll down to the bottom of the “Add Data” pop-up window and click on the green “Add Selected Layer” button.
- Repeat this process to add any other layers you wish to view and then close the pop-up window by clicking the “Close” button or the cross at the top of that window.

NOTE: The map viewer formatting (boundary line thicknesses and colours) is not set up to display lots of different electoral geography map layers clearly at one time. Having only 1 or 2 of these layers on display at a time may be most effective.

To hide or re-show layers that you have previously selected:

- Click the “main menu” (block of 9 little rectangles) icon in the top left of the screen. An “OPTIONS” pop-up window will appear.
- Find the name of map layer you want to hide or re-show and click the small grey/ black box to the left of its name to hide or show it.
- If the box has a tick in, that layer will be displayed; if the box is blank, the layer will be hidden, as shown in screenshot 3 below:



- To close the “OPTIONS” window, click the cross in the top right of the window.



To remove layers you have previously added:

- Click the “main menu” icon, so the “OPTIONS” pop-up window is on display. Click on the name of the map layer you wish to remove, so that its name is highlighted in orange (as in screenshot 3 above). Then click the “Remove” button at the bottom of the pop-up window.

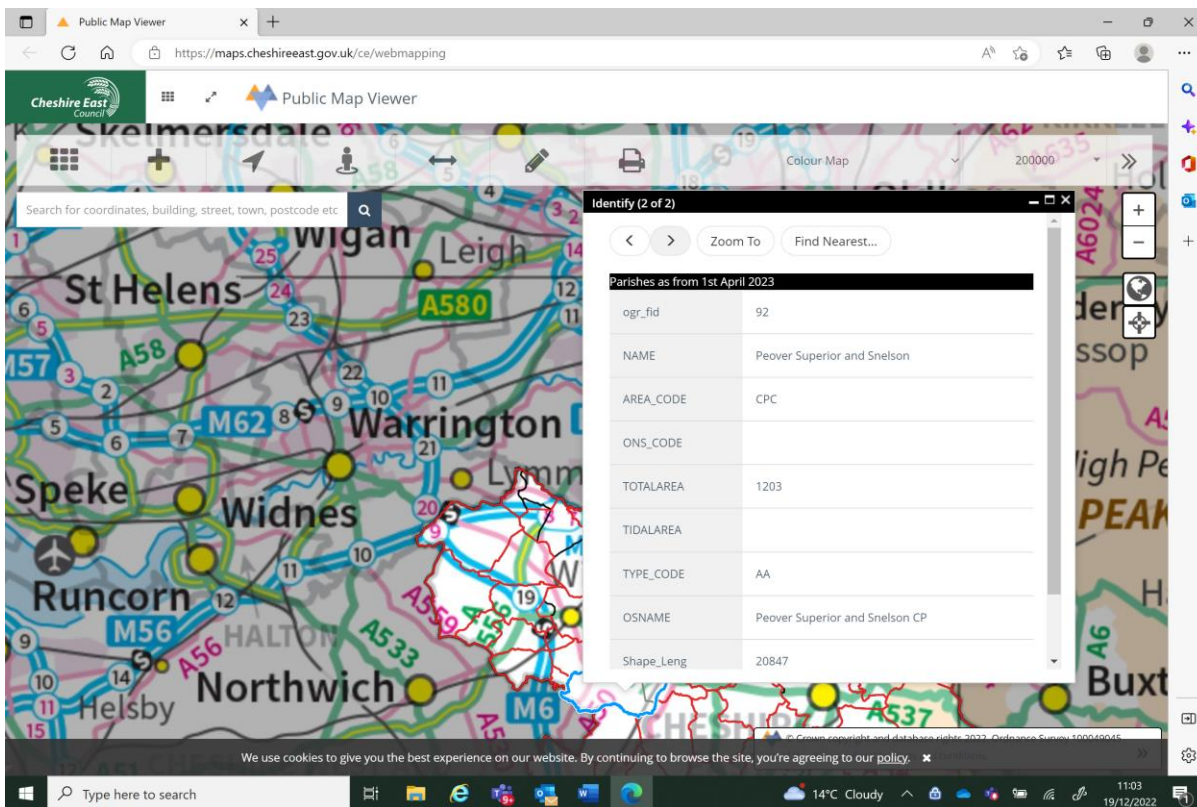
Colour Coding:

- As shown in screenshot 3 above, the new boundaries coming into effect next April are shown as red lines.
- The new polling stations appear as green circles.
- Current boundaries and polling stations are shown as:
 - Black lines for current parishes
 - Dark blue lines for current parish wards
 - Yellow lines for current polling districts
 - Red circles for current polling stations

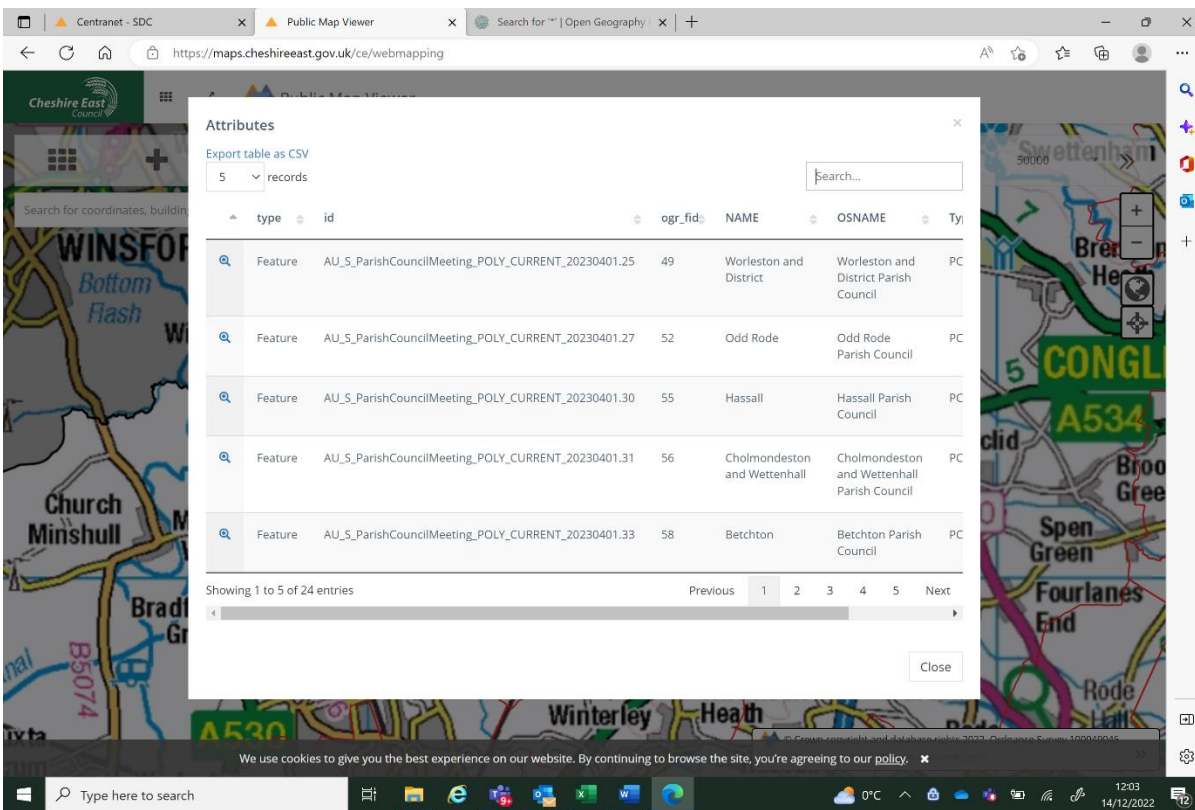
NOTE: There is no map layer for current town/ parish councils in the Public Map Viewer.

Detailed Information:

- To identify the name of a particular council, parish, parish ward, or polling district displayed on the map and any information about the electoral geographies it sits within, for example which parish council a particular parish ward is within, click somewhere within the area covered by the council, parish, parish ward or polling district of interest.
- A pop-up box will appear with the details.
- The boundary of the selected area is displayed in a different (light blue) colour, as shown in screenshot 4 below:



- If there are multiple map layers on display (in other words, multiple layers with boxes ticked in the main menu's "OPTIONS" window), the pop-up box will provide information about each of these. For example, if the "Parishes" (current parish boundaries) and "Parishes as from 1st April 2023" layers are on display:
 - The pop-up box will provide information about which parish the location you clicked on is currently in, and which parish it will be in from 1st April 2023.
 - To switch between the information on the current parish and the parish in existence from 1st April, click on the left/ right arrows in the top right of the pop-up box, as shown in screenshot 4 above.
- To close the pop-up box, click anywhere outside the box. Alternatively (if it is visible), you can click the cross in the top right of the box.
- There is an alternative way of displaying this information, which also allows you to sort a particular map layer's geographical areas into a certain order, for example to list parishes in alphabetical order. To do this, click the "main menu" (9 rectangles) icon. The "OPTIONS" pop-up window will appear.
- Next, click on the name of the layer of interest (e.g. "Parish Councils and Meetings as from 1st April 2023") so that name is highlighted in orange.
- Then click the "Attribute table" button that appears at the bottom of the pop-up window.
- A table will be shown listing all the names and other information about the areas within that map layer.
- The up/ down arrows next to each column of data's heading can be used to sort the table entries, as shown in screenshot 5 below:



Attributes

Export table as CSV

5 records

type	id	ogr_fid	NAME	OSNAME	Type
Feature	AU_S_ParishCouncilMeeting_POLY_CURRENT_20230401.25	49	Worleston and District	Worleston and District Parish Council	PC
Feature	AU_S_ParishCouncilMeeting_POLY_CURRENT_20230401.27	52	Odd Rode	Odd Rode Parish Council	PC
Feature	AU_S_ParishCouncilMeeting_POLY_CURRENT_20230401.30	55	Hassall	Hassall Parish Council	PC
Feature	AU_S_ParishCouncilMeeting_POLY_CURRENT_20230401.31	56	Cholmondeston and Wettenhall	Cholmondeston and Wettenhall Parish Council	PC
Feature	AU_S_ParishCouncilMeeting_POLY_CURRENT_20230401.33	58	Betchton	Betchton Parish Council	PC

Showing 1 to 5 of 24 entries

Previous 1 2 3 4 5 Next

Close

- To see columns of data that are out of sight, click the left/ right arrows at the bottom of the attribute table, or drag the grey bar at the bottom of the table (see screenshot 5 above).
- To view rows of data that are out of sight, click on the “Previous” or “Next” commands (or the numbers in between these) at the bottom of the table (as also shown in screenshot 5).
- You can also export the whole contents of the attribute table in csv file format, so they can be viewed within spreadsheet software such as Microsoft Excel. To do this, click the “Export table as CSV” option shown in the top left of the attribute table (see screenshot 5 again).
- To close the attribute table, click anywhere outside the attribute table window. Alternatively, you can click the cross in the top right of the window, or click the “Close” button in the bottom right of the window.

Guidance produced by the Cheshire East Community Governance Review project team, December 2022.